

# ARE YOU GONNA BE MY GIRL-MEDIUM LEVEL

♩=209 (swung eighth notes)

Jet

**Intro**

1st \* only (\*)

3

## Verse 1

## Chorus 1a

## Chorus 1b

**Break 1**

Musical notation for Break 1, measures 45-56. The notation is on a single staff with a treble clef and a key signature of two flats. It includes various note values (quarter, eighth, and sixteenth notes), rests, and articulation marks like stems and slurs. Some notes are color-coded (green, yellow, blue, red, orange).

**Verse 2**

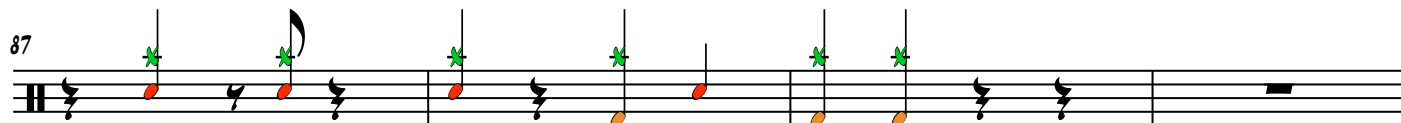
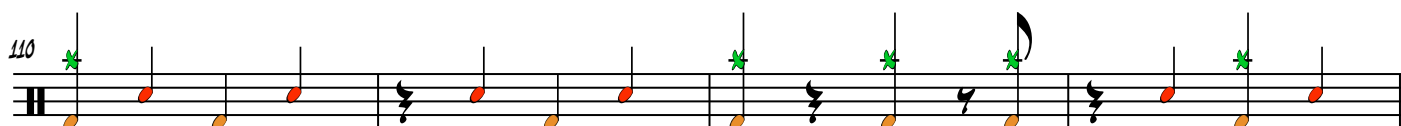
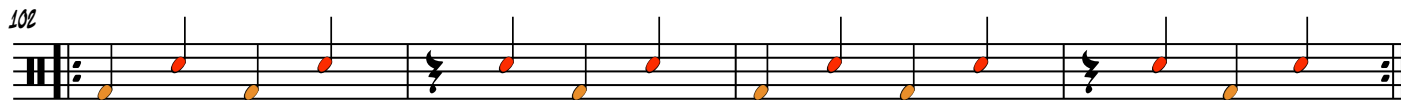
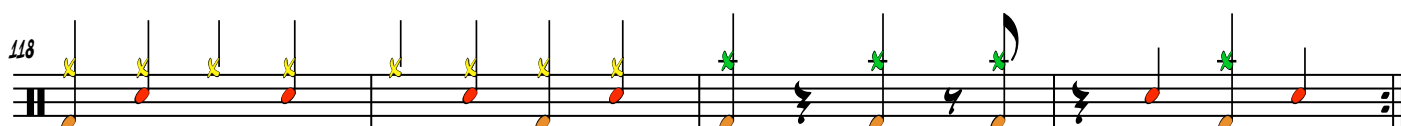
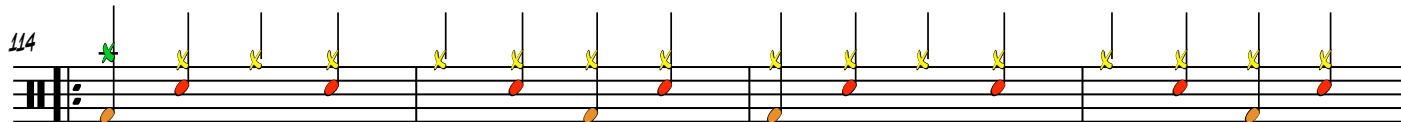
Musical notation for Verse 2, measures 57-74. The notation is on a single staff with a treble clef and a key signature of two flats. It includes various note values, rests, and articulation marks. Some notes are color-coded (green, yellow, blue, red, orange).

**Chorus 2a**

Musical notation for Chorus 2a, measures 75-84. The notation is on a single staff with a treble clef and a key signature of two flats. It includes various note values, rests, and articulation marks. Some notes are color-coded (green, yellow, blue, red, orange).

**Chorus 2b**

Musical notation for Chorus 2b, measures 85-94. The notation is on a single staff with a treble clef and a key signature of two flats. It includes various note values, rests, and articulation marks. Some notes are color-coded (green, yellow, blue, red, orange).

**Break 2****Guitar Solo****Chorus 3****Outro**